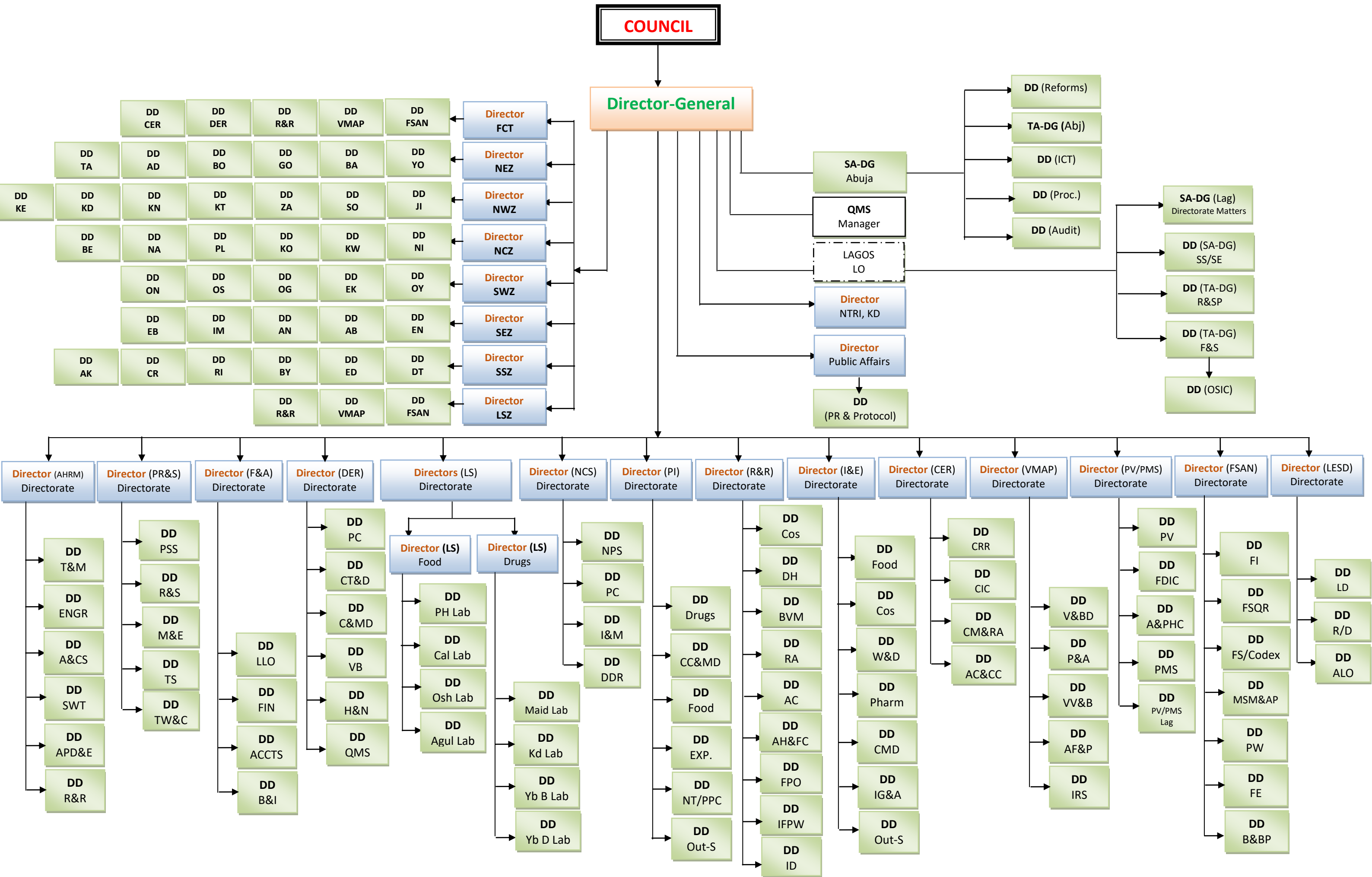


# ORGANOGRAM OF NATIONAL AGENCY FOR FOOD AND DRUG ADMINISTRATION AND CONTROL (NAFDAC)



## KEY

1. **Director, A&HRM Directorate:** (Admin & Human Resources Mgt)
  - a) **A&CS:** Administration & Corporate Services Division
  - b) **APD&E:** Appointment, Promotion Discipline & Est. Division
  - c) **SW&T:** Staff Welfare & Training Division
  - d) **R&R:** Records & Registry Division
  - e) **T&M:** Transport & Maintenance Division
  - f) **ENGR:** Engineering Division
2. **Director, PR&S Directorate:** (Planning, Research & Statistics)
  - a) **R&S:** Research & Statistics Division
  - b) **M&E:** Monitoring and Evaluation Division
  - c) **PSS:** Planning & Support Services Division
  - d) **TS:** Technical Services Division
  - e) **TW&C:** Training, Workshops & Conferences
3. **Director, F&A Directorate:** (Finance & Accounts)
  - a) **Fin:** Finance Division
  - b) **Accts:** Accounts Division
  - c) **B&I:** Budget & Imports Division
  - d) **LLO:** Lagos Liaison Office
4. **Director, DE&R Directorate:** (Drug Evaluation & Research)
  - a) **PC:** Pharma Compliance Division
  - b) **CT&D:** Clinical Trials & Drugs Division
  - c) **V&B:** Vaccines & Biologics Division
  - d) **C&MD:** Cosmetics & Medical Devices Division
  - e) **QMS:** Quality Management System Division
  - f) **H&N:** Herbal & Nutraceuticals
5. **Director, LS F:** (Laboratory Services Directorate: Food)
  - a) **Osh Lab:** Oshodi Central Laboratory
  - b) **Agu Lab:** Agulu Laboratory
  - c) **PH Lab:** Port Harcourt Laboratory
  - d) **Cal Lab:** Calabar Laboratory
6. **Director, LS D:** (Laboratory Services Directorate: Drugs)
  - e) **Yb B. Lab:** Yaba Biologics Laboratory
  - f) **Yb D. Lab:** Yaba Drugs Laboratory
  - f) **Maid. Lab:** Maiduguri Laboratory
  - g) **KD Lab:** Kaduna Area Laboratory
7. **Director, NCS Directorate:** (Narcotics & Controlled Substances)
  - a) **NPS:** Narcotics & Psychotropic Substances Division
  - b) **PC:** Precursor Chemicals Division
  - c) **I&M:** Inspection & Monitoring Division
  - d) **DDR:** Drug Demand Reduction Division
8. **Director, PI Directorate:** (Port Inspectorate)
  - a) **Food:** Port Food Inspection Division
  - b) **Drugs:** Port Drugs Inspection Division
  - c) **CC&MD:** Port Chemical, Cosmetics & Medical Devices
  - d) **EXP:** Exports Division
  - e) **NT&PPC:** New Technologies & Post Port Clearance Division
9. **Director, I&E Directorate:** (Investigation & Enforcement)
  - a) **IG&A:** Intelligence Gathering & Analysis Division
  - b) **Food:** Food Products Division
  - c) **Pharm:** Pharmaceuticals Division
  - d) **CMD:** Chemical & Medical Devices Division
  - e) **Cos:** Cosmetics Division
  - F) **W&D:** Water & Drinks Division
10. **Director, R&R Directorate:** (Registration & Regulatory Affairs)
  - a) **FPO:** Food Products & Others Division
  - b) **IF&PW:** Imported Food & Packaged Water Division
  - c) **DH:** Drugs & Herbal Division
  - d) **BVM:** Biologics & Medical Devices
  - e) **RA:** Regulatory Affairs Division
  - f) **AC:** Advert Control Division
  - g) **AHFC:** Animal Health Products & Finished Chemicals
  - h) **ID:** Imported Drugs
  - i) **Cos:** Cosmetics
11. **Director, PV/PMS Directorate:** (Pharmacovigilance & Post Marketing Surveillance)
  - a) **PV:** Pharmacovigilance Division
  - b) **PMS:** Post Market Surveillance Division
  - c) **FDIC:** Food, Drug Information Centre
  - d) **A&PHC:** Advocacy & Public Health Collaborations Division
  - e) **PV/PMS Lag:** PV/PMS Lagos Division
12. **Director, VM&AP Directorate:** (Veterinary Medicines & Allied Products)
  - a) **VM:** Veterinary Medicine Division.
  - b) **AF&P:** Animal Feeds & Premix Division
  - c) **P&A:** Pesticides & Agro-Chemicals Division
  - d) **IR&S:** Inspection, Regulations & Stakeholders Division
  - e) **VV&B:** Veterinary Vaccines & Biologics Division
13. **Director, CER Directorate:** (Chemical Evaluation & Research)
  - a) **CIC:** Chemical Imports Controlled Division
  - b) **CM&RA:** Chemical Monitoring & Risk Assessment Division
  - c) **AC & CC:** Agro-Chemicals & Chemical Control Division
  - d) **CRR:** Chemical Research & Review Division
14. **Director, FSAN Directorate:** (Food Safety & Applied Nutrition)
  - a) **FI:** Inspection Division (Food Products)
  - b) **FE:** Food Evaluation Division
  - c) **MSM & AP:** MSM & Agricultural Products
  - d) **FS/CODEX:** Food Safety/Codex/ Food Policy & Reg/National Food Safety Mgt Committee Division
  - e) **FSQSR:** Food Storage & Quick Service Restaurants Division
  - f) **PW:** Packaged Water Division
  - g) **B&BP:** Bakery & Baked Products Division
15. **Director, Legal Serv. Directorate:** (Legal Services)
  - a) **LD:** Litigation Division
  - b) **R/D:** Regulatory/Drafting Division
  - c) **ALO:** Abuja Liaison Office
16. **Director, PA:** (Public Affairs)
  - a) **PR&P:** Public Relations & Protocol Unit
17. **Director, FCT-Abuja:** (Federal Capital Territory, Abuja)
  - a) **FSAN, FCT:** Food Safety & Applied Nutrition Activities
  - b) **DER, FCT:** Drug Evaluation & Research Activities
  - c) **R&R, FCT:** Registration & Regulatory Affairs
  - d) **CER, FCT:** Chemical Evaluation & Research
  - e) **VMAP, FCT:** Veterinary Medicines & Applied Nutrition
18. **Director, NWZ:** (North West Zone, Kaduna)
  - a) **KD:** Kaduna State
  - b) **KN:** Kano State
  - c) **KT:** Katsina State
  - d) **SO:** Sokoto State
  - e) **ZA:** Zamfara State
  - f) **JI:** Jigawa State
  - g) **KE:** Kebbi State
19. **Director, NEZ:** (North East Zone, Maiduguri)
  - a) **BO:** Borno State
  - b) **GO:** Gombe State
  - c) **YO:** Yobe State
  - d) **AD:** Adamawa State
  - e) **TA:** Taraba State
  - f) **BA:** Bauchi State
20. **Director, SEZ:** (South East Zone, Enugu)
  - a) **EN:** Enugu State
  - b) **EB:** Ebonyi State
  - c) **IM:** Imo State
  - d) **AB:** Abia State
  - e) **AN:** Anambra State
21. **Director, SSZ:** (South-South Zone, Port Harcourt)
  - a) **RI:** Rivers State

- b) **CR:** Cross-River State
- c) **BY:** Bayelsa State
- d) **ED:** Edo State
- e) **AK:** Akwa-Ibom State
- f) **DE:** Delta State

22. **Director, SWZ:** (South West Zone, Ibadan)

- a) **OY:** Oyo State
- b) **OG:** Ogun State
- c) **OS:** Osun State
- d) **EK:** Ekiti State
- e) **ON:** Ondo State

23. **Director, NCZ:** (North Central Zone, Jos)

- a) **BE:** Benue State
- b) **NA:** Nassarawa State
- c) **KO:** Kogi State
- d) **NI:** Niger State
- e) **PL:** Plateau State
- f) **KW:** Kwara State

24. **Director, LSZ** (Lagos Special Zone)

**DGO:** (Director-General's Office)

i. SA-DG, Abuja

- a) **ICT:** Information Communication Technology Division
- b) **Audit:** Internal Audit Division
- c) **Proc.** Procurement Division
- d) **Reforms:** Reforms: (Anti-corruption, Servicom, Gender)
- e) TA-DG, Abuja (NW & NE Zones)

ii. Lagos Liaison Office

- a) SA-DG, Lagos (Directorates)
- b) DD/SA-DG, Lagos (Maintenance, Engineering, Transport, Zonal Supervisor SS & SE Zones)
- c) TA-DG (Food & Stakeholders), Lagos
  - OSIC: One-Stop Investment Centre
- d) TA-DG R&SP Lagos: (Research & Special Projects)
- e) QMS Manager: Quality Management System Manager